

Features

- RoHS compliant
- Wideband 10-1800MHz
- RF power: 1W Max.
- DC current: 30mA Max.
- Operation temperature -40~100°C
- Impedance ratio:1:1
- Available on tape and reel

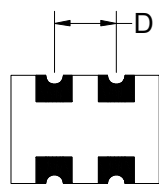
Applications

CATV broadband applications

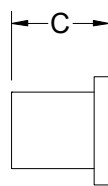


Mechanicals (Unit in mm, tolerance: +/-0.25 unless specify)

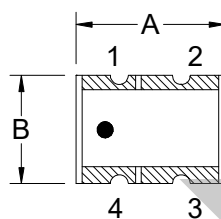
| A | B | C | D | E | F | G | H |
|------|------|------|------|------|------|------|------|
| 6.10 | 4.32 | 3.60 | 2.54 | 5.13 | 1.40 | 2.54 | 1.45 |



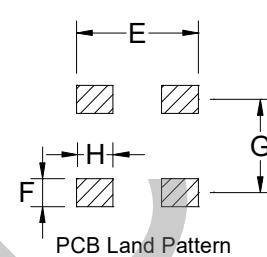
BOTTOM VIEW



SIDE VIEW

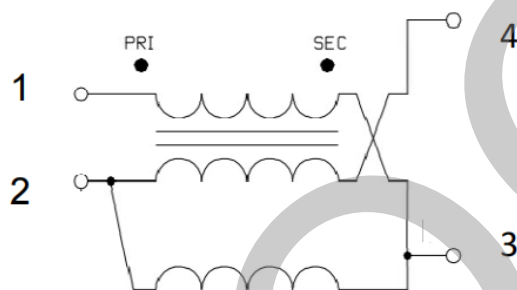


TOP VIEW



PCB Land Pattern

Schematics



Pin connections

| | |
|---|---------------|
| 1 | Primary Dot |
| 2 | Primary |
| 3 | Secondary Dot |
| 4 | Secondary |

Electrical Specifications: TA=25°C, Zo=75Ω

| Parameters | Test condition | Unit | Min. | Typ. | Max. |
|---------------------|----------------|------|------|------|------|
| Frequency | - | MHz | 10 | - | 1800 |
| Insertion Loss | 50-1200MHz | dB | - | - | 1.0 |
| | 10-1800MHz | | - | - | 2.0 |
| Input Return Loss | 50-500MHz | dB | 16 | - | - |
| | 500-1000MHz | | 13 | - | - |
| | 1000-1200MHz | | 12 | - | - |
| | 10-1800MHz | | 8 | - | - |
| Amplitude Unbalance | 50-1000MHz | dB | - | - | 0.7 |
| | 1000-1200MHz | | - | - | 1.1 |
| | 10-1800MHz | | - | - | 1.5 |
| Phase Unbalance | 50-1000MHz | Deg | - | - | 4 |
| | 1000-1200MHz | | - | - | 6 |
| | 10-1800MHz | | - | - | 15 |



Test curve

