

Features

- RoHS compliant
- Impedance ratio:1:1
- Input Power: 250mW Max.
- DC Current 30mA Max.
- Wideband 5-1200MHz
- Operation temperature -20~85°C

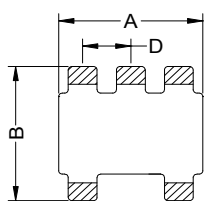


Applications

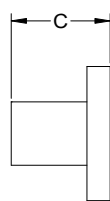
High volume cellular and wireless applications

Mechanicals (Unit in mm, tolerance: +/-0.25 unless specify)

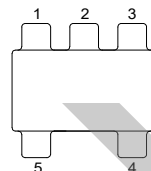
A	B	C	D	E	F	G	H	I
3.81	3.81	3.81 Max	1.27	4.83	3.30	1.4	0.76	1.27



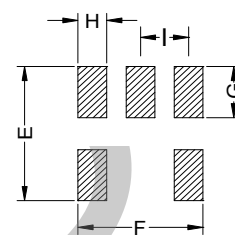
BOTTOM VIEW



SIDE VIEW

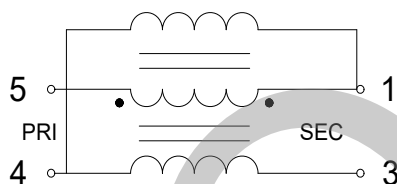


TOP VIEW



PCB Land Pattern

Schematics



Pin connections

PIN 1	Secondary Dot
PIN 2	No used
PIN 3	Secondary
PIN 4	Primary
PIN 5	Primary Dot

Electrical Specifications: TA=25°C Zo=75Ω

Parameters	Test condition	Unit	Min.	Typ.	Max.
Frequency	-	MHz	5	-	1200
Insertion Loss	5-40MHz	dB	-	0.2	0.5
	40-600MHz		-	0.3	1.0
	600-1000MHz		-	0.6	2.0
	1000-1200MHz		-	1.6	3.0
Amplitude Balance	5-1200MHz	dB	-	0.4	1.0
Phase Balance (Nominal 180°)	5-1000MHz	Deg	-	0.6	10
	1000-1200MHz		-	9.2	20
Return Loss	5-40MHz	dB	17	27	-
	40-200MHz		22	29	-
	200-400MHz		15	22	-
	400-600MHz		10	17	-
	600-1200MHz		6	11	-



Test curve

