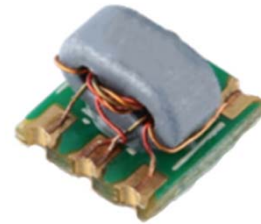


7.5dB coupler

BD-STB-01007

Features

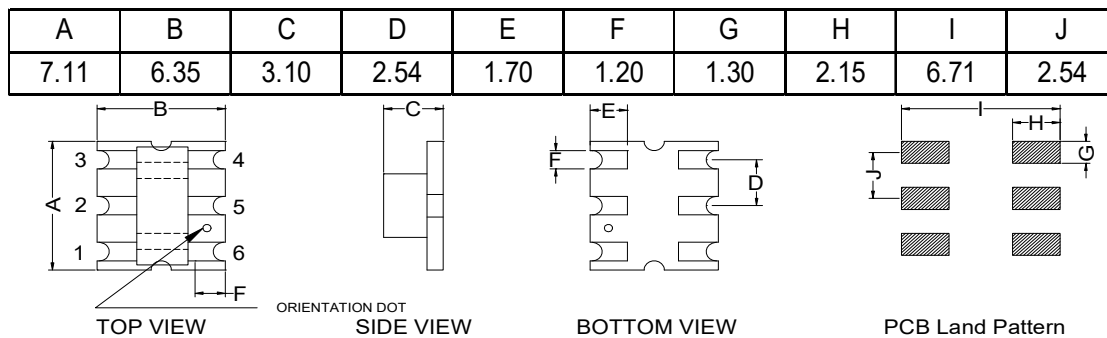
- RoHS compliant
- Wideband 5-1225MHz
- RF power: 2W Max.
- DC current: 500mA Max.
- Operation temperature -40~85°C



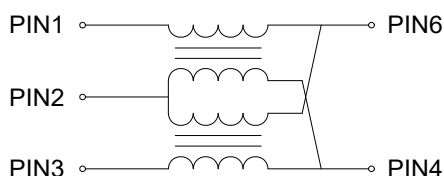
Applications

CATV, Full Duplex and DOCSIS3.1 applications

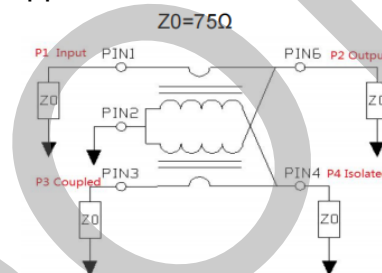
Mechanicals (Unit in mm; tolerance: +/-0.25 unless specify):



Schematics



Application & test circuit



Pin connection

Pin 1	Input
Pin 2	Ground
Pin 3	Coupled
Pin 4	Isolated
Pin 5	Not Connected
Pin 6	Output

Electrical Specifications: TA=25°C Zo=75Ω

Parameters	Test condition	Unit	Min.	Typ.	Max.
Frequency	-	MHz	5	-	1225
Coupling (pin1-3)	5-1225MHz	dB	7	7.5	8.5
Main Line Loss (pin1-6)	5-1000MHz	dB	-	1.7	2.1
	1000-1225MHz	dB	-	1.9	2.5
Input Return Loss (pin1)	5-500MHz	dB	17	19	-
	500-1225MHz	dB	12	15	-
Output Return Loss (pin6)	5-500MHz	dB	17	20	-
	500-1225MHz	dB	12	14	-
Coupled Return Loss (pin3)	5-50MHz	dB	17	18	-
	50-1225MHz	dB	15	17	-
Isolation	5-500MHz	dB	24	30	-
	500-1225MHz	dB	17	21	-



Huizhou Boody Technology Co., Ltd
Http://www.boody.com.cn

Tel: +86-752-2831031
Fax: +86-752-2831030
E-mail: sales-hz@boody.com.cn

ISO9001/14001 Certified
UL insulation systems: E358019

Test curve

