

13dB Coupler

BD-STB-01010

Features

- RoHS compliant
- Wideband: 5-1218MHz
- RF power: 2.0W Max.
- DC current: 500mA Max.
- Operation temperature: -40~125°C
- Surface mount

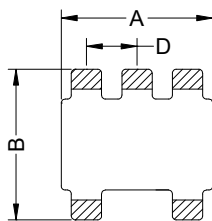
Applications

CATV broadband, VHF/UHF and cellular applications

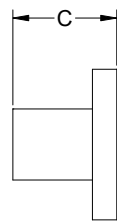


Mechanicals (Unit in mm, tolerance: +/-0.25 unless specify)

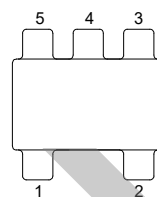
A	B	C	D	E	F	G	H	I
3.81	3.81	2.9	1.27	4.83	3.3	1.4	0.76	1.27



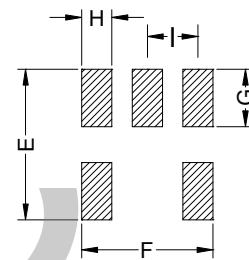
BOTTOM VIEW



SIDE VIEW

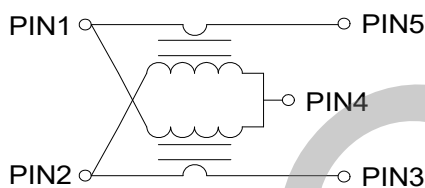


TOP VIEW



PCB Land Pattern

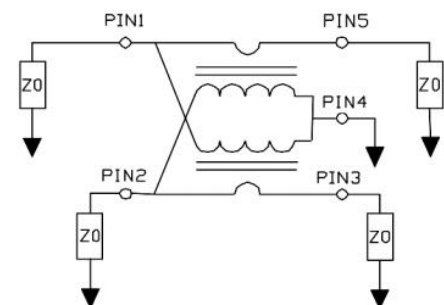
Schematics



Pin connections

1	input
2	Coupled
3	External 75Ω
4	Ground
5	Output

Application & test circuit



Electrical Specifications: TA=25°C Zo=75Ω

Parameters	Test condition	Unit	Min.	Typ.	Max.
Coupling	5-1218MHz	dB	12.4	13	13.6
Main Line Loss	5-700MHz	dB	-	0.7	1.0
	700-1218MHz		-	0.8	1.0
Isolation	5-700MHz	dB	32	35	-
	700-1218MHz		27	30	-
Input Return Loss	5-700MHz	dB	20	25	-
	700-1218MHz		16	24	-
Output Return Loss	5-700MHz	dB	18	25	-
	700-1218MHz		16	24	-
Coupling Return Loss	5-700MHz	dB	17	23	-
	700-1218MHz		16	22	-



Huizhou Boody Technology Co., Ltd
Http://www.boody.com.cn

Tel: +86-752-2831031
Fax: +86-752-2831030
E-mail: sales-hz@boody.com.cn

ISO9001/14001 Certified
UL insulation systems: E358019

Test curve

