

10dB Coupler

BD-STB-01011

Features

- RoHS compliant
- Wideband: 5-1000MHz
- RF power: 0.25W Max.
- DC current: 30mA Max.
- Operation temperature: -20~80°C

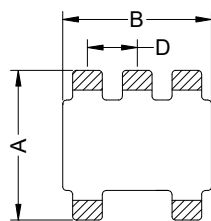
Applications

CATV broadband applications

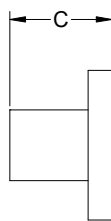


Mechanicals (Unit in mm, tolerance: +/-0.25 unless specify)

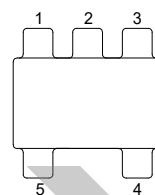
A	B	C	D	E	F	G	H	I
3.81	3.81	2.74	1.27	4.83	3.30	1.40	0.76	1.27



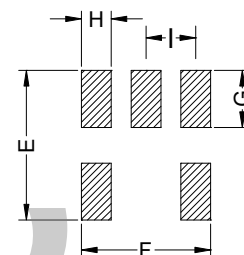
BOTTOM VIEW



SIDE VIEW

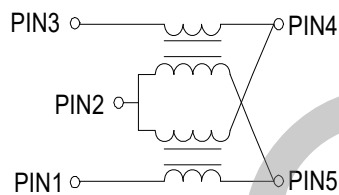


TOP VIEW



PCB Land Pattern

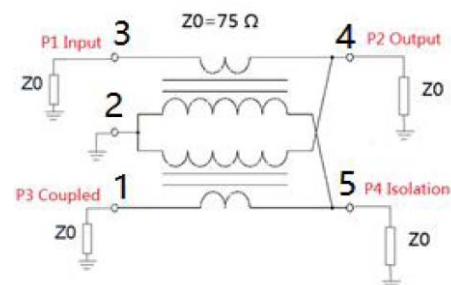
Schematics



Pin connections

1	Coupled
2	Ground
3	input
4	Output
5	External 75Ω

Application & test circuit



Electrical Specifications: TA=25°C Zo=75Ω

Parameters	Test condition	Unit	Min.	Typ.	Max.
Coupling	5-1000MHz	dB	9.0	10	11.0
Main Line Loss	5-50MHz	dB	-	1.2	1.4
	50-500MHz	dB	-	1.4	1.7
	500-1000MHz		-	1.8	2.0
Directivity	5-50MHz	dB	20	22	-
	50-600MHz		16	20	-
	600-1000MHz		14	18	-
Input Return Loss	5-1000MHz	dB	12	18	-
Output Return Loss	5-1000MHz	dB	12	23	-
Coupled Return Loss	5-1000MHz	dB	12	16	-



Huizhou Boody Technology Co., Ltd
Http://www.boody.com.cn

Tel: +86-752-2831031
Fax: +86-752-2831030
E-mail: sales-hz@boody.com.cn

ISO9001/14001 Certified
UL insulation systems: E358019

Test curve

