

Radial drum inductor



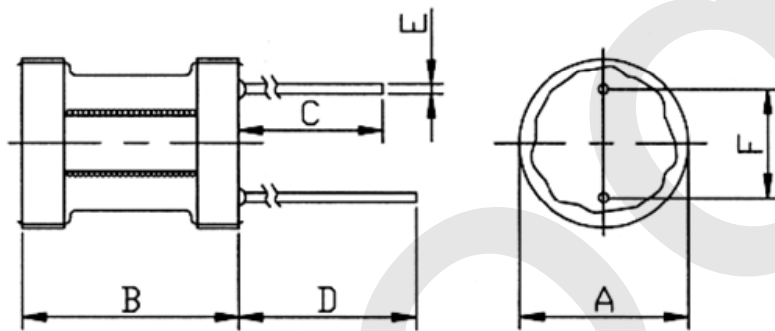
Features

- Ø Through hole profile
- Ø Wide range of inductance
- Ø Wide variety for sizes and specifications
- Ø Small mounting space
- Ø RoHS compatible
- Ø Operating temperature: -20 to 105°C
- Ø Wide application for power supplies and LED drivers

Benefits

- Ø Rapid prototyping available
- Ø Custom design from customer is available
- Ø Lost cost

Mechanicals (in mm):



Series	A(Max.)	B(Max.)	C(Min.)	D(Min.)	E	F
RC0304	4.0	6.0	10.0	15.0	0.6	1.3
RC0405	5.0	7.0	10.0	15.0	0.6	2.0
RC0507	6.0	9.0	10.0	15.0	0.6	2.5
RC0608	7.5	10.0	10.0	15.0	0.6	3.0
RC0707	8.5	9.0	10.0	15.0	0.6	4.8
RC0810	9.5	12.0	10.0	15.0	0.6	5.0
RC0912	10.5	14.0	10.0	15.0	0.8	5.0



RC0304 series

Part No.	Inductance (H)	Q(Min)	DCR (Max)	DCI mA (Max)	SRF M Hz (Min)	Measuring Frequency
RC0304-1R0M	1.0	80	0.1	1000	175	7.96MHz
RC0304-1R2M	1.2	80	0.1	1000	150	7.96MHz
RC0304-1R5M	1.5	87	0.1	900	120	7.96MHz
RC0304-1R8M	1.8	81	0.1	800	102	7.96MHz
RC0304-2R2M	2.2	77	0.1	700	83	7.96MHz
RC0304-2R7M	2.7	77	0.2	700	71	7.96MHz
RC0304-3R3K	3.3	77	0.2	650	59	7.96MHz
RC0304-3R9K	3.9	71	0.2	650	44	7.96MHz
RC0304-4R7K	4.7	71	0.2	500	43	7.96MHz
RC0304-5R6K	5.6	70	0.3	450	39	7.96MHz
RC0304-6R8K	6.8	70	0.3	400	30	7.96MHz
RC0304-8R2K	8.2	67	0.3	350	22	7.96MHz
RC0304-100K	10	60	0.4	350	21	2.52MHz
RC0304-120K	12	67	0.5	300	20	2.52MHz
RC0304-150K	15	65	0.6	300	18	2.52MHz
RC0304-180K	18	60	0.6	300	16	2.52MHz
RC0304-220K	22	60	0.7	290	15	2.52MHz
RC0304-270K	27	58	0.8	270	13	2.52MHz
RC0304-330K	33	52	0.9	270	12	2.52MHz
RC0304-390K	39	52	2	260	11	2.52MHz
RC0304-470K	47	46	2	250	10	2.52MHz
RC0304-560K	56	65	3	180	9	2.52MHz
RC0304-680K	68	62	3	170	8	2.52MHz
RC0304-820K	82	60	3	170	8	2.52MHz
RC0304-101K	100	75	4	160	6	796KHz
RC0304-121K	120	75	4	150	6	796KHz
RC0304-151K	150	75	4	150	5	796KHz
RC0304-181K	180	75	5	130	4	796KHz
RC0304-221K	220	77	8	100	4	796KHz
RC0304-271K	270	80	9	90	4	796KHz
RC0304-331K	330	81	10	90	3.5	796KHz
RC0304-391K	390	80	10	80	3.5	796KHz
RC0304-471K	470	80	11	80	3	796KHz
RC0304-561K	560	80	15	70	3	796KHz
RC0304-681K	680	65	24	50	2	796KHz
RC0304-821K	820	65	26	50	2	796KHz
RC0304-102K	1000	36	29	50	1.5	252KHz
RC0304-122K	1200	36	33	40	1.5	252KHz
RC0304-152K	1500	37	37	40	1.5	252KHz
RC0304-182K	1800	44	41	40	1.5	252KHz
RC0304-222K	2200	44	46	30	1.5	252KHz
RC0304-272K	2700	47	51	30	1.5	252KHz



RC0405 series

Part No.	Inductance (H)	Q(Min)	DCR (Max)	DCI mA (Max)	SRF MHz (Min)	Measuring Frequency
RC0405-1R0K	1.0	84	0.1	1400	200.0	7.96MHz
RC0405-1R2K	1.2	70	0.12	1200	170.0	7.96MHz
RC0405-1R5K	1.5	80	0.15	1200	140.0	7.96MHz
RC0405-1R8K	1.8	90	0.17	1100	130.0	7.96MHz
RC0405-2R2K	2.2	98	0.2	1100	125.0	7.96MHz
RC0405-2R7K	2.7	94	0.2	1000	113.0	7.96MHz
RC0405-3R3K	3.3	93	0.22	1000	92.0	7.96MHz
RC0405-3R9K	3.9	86	0.24	1000	77.0	7.96MHz
RC0405-4R7K	4.7	84	0.26	800	58.0	7.96MHz
RC0405-5R6K	5.6	84	0.28	800	42.0	7.96MHz
RC0405-6R8K	6.8	82	0.3	800	35.0	7.96MHz
RC0405-8R2K	8.2	77	0.35	800	32.0	7.96MHz
RC0405-100K	10	70	0.46	700	27.0	2.52MHz
RC0405-120K	12	80	0.48	600	20.0	2.52MHz
RC0405-150K	15	77	0.55	600	18.0	2.52MHz
RC0405-180K	18	87	0.65	500	16.0	2.52MHz
RC0405-220K	22	84	0.72	500	14.0	2.52MHz
RC0405-270K	27	77	0.78	400	13.0	2.52MHz
RC0405-330K	33	74	0.87	400	12.0	2.52MHz
RC0405-390K	39	70	0.90	400	11.0	2.52MHz
RC0405-470K	47	65	0.98	400	10.0	2.52MHz
RC0405-560K	56	58	1.5	300	9.50	2.52MHz
RC0405-680K	68	55	1.9	300	9.00	2.52MHz
RC0405-820K	82	53	2.5	300	8.60	2.52MHz
RC0405-101K	100	56	3.0	200	7.00	796KHz
RC0405-121K	120	70	3.8	200	6.30	796KHz
RC0405-151K	150	63	4.5	200	5.70	796KHz
RC0405-181K	180	62	5.0	200	5.30	796KHz
RC0405-221K	220	66	5.8	200	5.00	796KHz
RC0405-271K	270	66	6.5	150	4.50	796KHz
RC0405-331K	330	60	7.0	150	4.00	796KHz
RC0405-391K	390	56	7.7	150	3.80	796KHz
RC0405-471K	470	61	8.0	120	3.50	796KHz
RC0405-561K	560	59	8.5	120	3.20	796KHz
RC0405-681K	680	56	9.5	120	3.00	796KHz
RC0405-821K	820	61	15	100	2.80	796KHz
RC0405-102K	1000	77	17	100	2.50	252KHz
RC0405-122K	1200	71	20	80	2.30	252KHz
RC0405-152K	1500	76	22	80	2.10	252KHz
RC0405-182K	1800	77	25	70	1.80	252KHz
RC0405-222K	2200	81	26	60	1.60	252KHz
RC0405-272K	2700	57	46	40	1.36	252KHz
RC0405-332K	3300	60	50	30	1.27	252KHz
RC0405-392K	3900	56	54	30	1.20	252KHz
RC0405-472K	4700	65	60	30	1.06	252KHz
RC0405-562K	5600	66	65	30	1.02	252KHz
RC0405-682K	6800	66	72	30	0.96	252KHz
RC0405-822K	8200	70	80	20	0.93	252KHz
RC0405-103K	10000	35	95	10	0.89	79.6KHz



RC0507 series

Part No.	Inductance	Q(Min)	DCR	DCI mA	SRF M Hz	Measuring
	(H)		(Max)	(Max)	(Min)	Frequency
RC0507-1R0M	1.0	85	0.014	4000	140	7.96MHz
RC0507-1R5M	1.5	85	0.02	3000	90	7.96MHz
RC0507-2R2M	2.2	85	0.02	2500	55	7.96MHz
RC0507-3R3K	3.3	85	0.03	2000	50	7.96MHz
RC0507-4R7K	4.7	80	0.04	1900	30	7.96MHz
RC0507-6R8K	6.8	75	0.06	1500	25	7.96MHz
RC0507-100K	10	70	0.08	1400	22	2.52MHz
RC0507-120K	12	70	0.10	1200	20	2.52MHz
RC0507-150K	15	65	0.11	1000	16	2.52MHz
RC0507-180K	18	50	0.11	950	14	2.52MHz
RC0507-220K	22	50	0.12	900	14	2.52MHz
RC0507-270K	27	50	0.14	800	12	2.52MHz
RC0507-330K	33	50	0.16	700	10	2.52MHz
RC0507-390K	39	45	0.18	650	9.0	2.52MHz
RC0507-470K	47	45	0.20	600	9.0	2.52MHz
RC0507-560K	56	35	0.22	55	8.0	2.52MHz
RC0507-680K	68	35	0.30	0520	8.0	2.52MHz
RC0507-820K	82	35	0.34	490	7.0	2.52MHz
RC0507-101K	100	20	0.36	420	6.0	796KHz
RC0507-121K	120	20	0.44	360	5.5	796KHz
RC0507-151K	150	20	0.52	320	5.0	796KHz
RC0507-181K	180	20	0.65	320	4.5	796KHz
RC0507-221K	220	20	0.75	300	4.0	796KHz
RC0507-271K	270	25	1.0	250	3.5	796KHz
RC0507-331K	330	25	1.3	240	3.0	796KHz
RC0507-391K	390	25	1.4	200	3.0	796KHz
RC0507-471K	470	25	1.6	200	2.7	796KHz
RC0507-561K	560	25	2.0	190	2.5	796KHz
RC0507-681K	680	25	2.3	170	2.4	796KHz
RC0507-821K	820	25	2.7	150	2.2	796KHz
RC0507-102K	1000	50	3.1	130	2.0	252KHz
RC0507-122K	1200	65	4.6	120	1.5	252KHz
RC0507-152K	1500	65	5.3	110	1.3	252KHz
RC0507-182K	1800	65	6.2	100	1.2	252KHz
RC0507-222K	2200	65	6.8	90	1.1	252KHz
RC0507-272K	2700	80	10	90	1.0	252KHz
RC0507-332K	3300	75	12	80	0.95	252KHz
RC0507-392K	3900	70	13	70	0.90	252KHz
RC0507-472K	4700	65	15	60	0.90	252KHz
RC0507-562K	5600	65	22	60	0.80	252KHz
RC0507-682K	6800	65	25	55	0.75	252KHz
RC0507-822K	8200	65	28	55	0.70	252KHz
RC0507-103K	10000	65	35	45	0.60	79.6KHz
RC0507-123K	12000	65	45	45	0.45	79.6KHz
RC0507-153K	15000	65	52	35	0.40	79.6KHz
RC0507-183K	18000	65	58	35	0.40	79.6KHz
RC0507-223K	22000	65	80	25	0.350	79.6KHz
RC0507-273K	27000	65	90	25	0.30	79.6KHz
RC0507-333K	33000	55	135	15	0.25	79.6KHz
RC0507-393K	39000	55	150	15	0.25	79.6KHz
RC0507-473K	47000	55	170	15	0.25	79.6KHz



RC0608 series

Part No.	Inductance (H)	Q(Min)	DCR (Max)	DCI mA (Max)	SRF M Hz (Min)	Measuring Frequency
RC0608-100K	10	25	0.09	1300	16	2.52MHz
RC0608-120K	12	25	0.10	1100	15	2.52MHz
RC0608-150K	15	25	0.11	1050	13	2.52MHz
RC0608-180K	18	20	0.12	1000	12	2.52MHz
RC0608-220K	22	25	0.12	960	11	2.52MHz
RC0608-270K	27	25	0.17	920	10	2.52MHz
RC0608-330K	33	25	0.19	880	8.8	2.52MHz
RC0608-390K	39	20	0.22	860	8.4	2.52MHz
RC0608-470K	47	20	0.23	830	8.2	2.52MHz
RC0608-560K	56	20	0.29	810	7.9	2.52MHz
RC0608-680K	68	20	0.37	750	7.0	2.52MHz
RC0608-820K	82	20	0.39	740	6.5	2.52MHz
RC0608-101K	100	30	0.44	710	5.7	796KHz
RC0608-121K	120	30	0.64	680	5.2	796KHz
RC0608-151K	150	35	0.73	600	4.7	796KHz
RC0608-181K	180	35	0.82	540	4.2	796KHz
RC0608-221K	220	35	0.92	450	3.7	796KHz
RC0608-271K	270	30	1.3	420	3.5	796KHz
RC0608-331K	330	40	1.5	400	3.2	796KHz
RC0608-391K	390	25	1.8	370	2.9	796KHz
RC0608-471K	470	35	2.3	340	2.4	796KHz
RC0608-561K	560	35	3.0	280	2.2	796KHz
RC0608-681K	680	45	3.25	250	2.0	796KHz
RC0608-821K	820	40	4.16	230	1.6	796KHz
RC0608-102K	1000	80	4.55	210	1.5	252KHz
RC0608-122K	1200	80	5.20	200	1.4	252KHz
RC0608-152K	1500	75	7.54	180	1.3	252KHz
RC0608-182K	1800	80	7.54	160	1.2	252KHz
RC0608-222K	2200	80	8.32	150	1.1	252KHz
RC0608-272K	2700	80	9.62	130	1.0	252KHz
RC0608-332K	3300	80	10.92	130	0.85	252KHz
RC0608-392K	3900	80	16.12	100	0.78	252KHz
RC0608-472K	4700	80	17.81	85	0.68	252KHz
RC0608-562K	5600	80	20.0	70	0.62	252KHz
RC0608-682K	6800	80	27.3	65	0.61	252KHz
RC0608-822K	8200	80	31.2	60	0.60	252KHz
RC0608-103K	10000	80	39.0	58	0.48	79.6KHz
RC0608-123K	12000	80	42.9	56	0.44	79.6KHz
RC0608-153K	15000	70	65.0	53	0.35	79.6KHz
RC0608-183K	18000	75	72.8	50	0.30	79.6KHz
RC0608-223K	22000	80	82.55	46	0.28	79.6KHz
RC0608-273K	27000	80	95.42	42	0.25	79.6KHz
RC0608-333K	33000	70	135.2	38	0.23	79.6KHz
RC0608-393K	39000	70	154.7	37	0.20	79.6KHz
RC0608-473K	47000	70	172.9	35	0.16	79.6KHz



RC0707 series

Part No.	Inductance (H)	Q(Min)	DCR (Max)	DCI mA (Max)	SRF M Hz (Min)	Measuring Frequency
RC0707-1R0M	1.0	90	0.014	5980	100	7.96MHz
RC0707-1R5M	1.5	90	0.017	4850	80	7.96MHz
RC0707-2R2M	2.2	90	0.017	3560	40	7.96MHz
RC0707-3R3K	3.3	90	0.021	2970	40	7.96MHz
RC0707-4R7K	4.7	90	0.030	2340	36	7.96MHz
RC0707-6R8K	6.8	90	0.054	1980	30	7.96MHz
RC0707-100K	10	85	0.084	1980	15	2.52MHz
RC0707-120K	12	85	0.090	1880	15	2.52MHz
RC0707-150K	15	65	0.11	1650	15	2.52MHz
RC0707-180K	18	65	0.12	1550	15	2.52MHz
RC0707-220K	22	65	0.13	1413	11	2.52MHz
RC0707-270K	27	50	0.14	1278	11	2.52MHz
RC0707-330K	33	50	0.15	1161	11	2.52MHz
RC0707-390K	39	50	0.16	1062	11	2.52MHz
RC0707-470K	47	50	0.22	972	7.0	2.52MHz
RC0707-560K	56	50	0.25	891	7.0	2.52MHz
RC0707-680K	68	40	0.31	810	7.0	2.52MHz
RC0707-820K	82	40	0.34	729	7.0	2.52MHz
RC0707-101K	100	40	0.43	675	4.0	796KHz
RC0707-121K	120	40	0.56	630	4.0	796KHz
RC0707-151K	150	60	0.94	531	4.0	796KHz
RC0707-181K	180	60	1.02	504	4.0	796KHz
RC0707-221K	220	60	1.14	477	4.0	796KHz
RC0707-271K	270	60	1.29	432	3.0	796KHz
RC0707-331K	330	70	2.04	387	3.0	796KHz
RC0707-391K	390	70	2.24	360	2.0	796KHz
RC0707-471K	470	70	2.51	333	2.0	796KHz
RC0707-561K	560	55	2.83	306	2.0	796KHz
RC0707-681K	680	55	3.08	279	2.0	796KHz
RC0707-821K	820	55	3.41	261	2.0	796KHz
RC0707-102K	1000	75	3.90	189	1.5	252KHz
RC0707-122K	1200	75	4.42	180	1.5	252KHz
RC0707-152K	1500	75	5.11	162	1.5	252KHz
RC0707-182K	1800	75	5.81	144	1.0	252KHz
RC0707-222K	2200	75	8.38	135	1.0	252KHz
RC0707-272K	2700	75	9.59	126	1.0	252KHz
RC0707-332K	3300	75	11.04	117	1.0	252KHz
RC0707-392K	3900	75	12.5	108	0.8	252KHz
RC0707-472K	4700	75	14.3	99	0.8	252KHz
RC0707-562K	5600	70	16.0	90	0.8	252KHz
RC0707-682K	6800	70	20.9	81	0.5	252KHz
RC0707-822K	8200	70	29.2	72	0.5	252KHz
RC0707-103K	10000	70	33.4	63	0.5	79.6KHz
RC0707-123K	12000	70	43.1	54	0.5	79.6KHz
RC0707-153K	15000	70	50.5	54	0.5	79.6KHz
RC0707-183K	18000	70	69.1	45	0.3	79.6KHz
RC0707-223K	22000	70	80.6	36	0.3	79.6KHz
RC0707-273K	27000	70	94.2	27	0.3	79.6KHz
RC0707-333K	33000	70	139.0	18	0.3	79.6KHz
RC0707-393K	39000	70	155.6	18	0.3	79.6KHz
RC0707-473K	47000	70	176.6	18	0.3	79.6KHz



RC0810 series

Part No.	Inductance (H)	Q(Min)	DCR (Max)	DCI mA (Max)	SRF M Hz (Min)	Measuring Frequency
RC0810-1R0M	1.0	90	0.02	3400	100	7.96MHz
RC0810-1R2M	1.2	90	0.02	3400	90	7.96MHz
RC0810-1R5M	1.5	95	0.02	3400	80	7.96MHz
RC0810-1R8M	1.8	95	0.03	3300	75	7.96MHz
RC0810-2R2M	2.2	100	0.03	3000	70	7.96MHz
RC0810-2R7M	2.7	110	0.04	3000	60	7.96MHz
RC0810-3R3M	3.3	110	0.04	3000	56	7.96MHz
RC0810-3R9M	3.9	110	0.05	2900	52	7.96MHz
RC0810-4R7M	4.7	110	0.05	2900	30	7.96MHz
RC0810-5R6M	5.6	110	0.06	2600	30	7.96MHz
RC0810-6R8M	6.8	90	0.06	2500	20	7.96MHz
RC0810-8R2M	8.2	80	0.06	2000	17	7.96MHz
RC0810-100K	10	90	0.10	1600	12	2.52MHz
RC0810-120K	12	90	0.10	1400	11	2.52MHz
RC0810-150K	15	90	0.10	1300	10	2.52MHz
RC0810-180K	18	80	0.11	1200	9.0	2.52MHz
RC0810-220K	22	70	0.13	1100	8.0	2.52MHz
RC0810-270K	27	70	0.14	1000	7.0	2.52MHz
RC0810-330K	33	70	0.16	900	7.0	2.52MHz
RC0810-390K	39	70	0.16	800	6.0	2.52MHz
RC0810-470K	47	70	0.16	700	5.5	2.52MHz
RC0810-560K	56	60	0.22	700	5.5	2.52MHz
RC0810-680K	68	60	0.23	600	5.0	2.52MHz
RC0810-820K	82	60	0.27	500	4.5	2.52MHz
RC0810-101K	100	40	0.29	400	4.5	796KHz
RC0810-121K	120	40	0.33	400	4.5	796KHz
RC0810-151K	150	40	0.46	350	4.5	796KHz
RC0810-181K	180	40	0.51	350	4.0	796KHz
RC0810-221K	220	40	0.62	300	3.5	796KHz
RC0810-271K	270	30	0.65	250	3.0	796KHz
RC0810-331K	330	30	0.79	250	3.0	796KHz
RC0810-391K	390	30	0.91	200	2.5	796KHz
RC0810-471K	470	30	1.2	180	2.5	796KHz
RC0810-561K	560	30	1.2	160	2.0	796KHz
RC0810-681K	680	30	1.5	140	2.0	796KHz
RC0810-821K	820	25	1.7	140	2.0	796KHz
RC0810-102K	1000	50	2.0	120	2.0	252KHz
RC0810-122K	1200	45	2.3	100	1.5	252KHz
RC0810-152K	1500	45	2.9	80	1.5	252KHz
RC0810-182K	1800	45	3.5	80	1.5	252KHz
RC0810-222K	2200	50	4.2	70	1.0	252KHz
RC0810-272K	2700	50	5.1	60	1.0	252KHz
RC0810-332K	3300	50	6.1	60	0.9	252KHz
RC0810-392K	3900	50	7.8	50	0.8	252KHz
RC0810-472K	4700	55	11	50	0.7	252KHz
RC0810-562K	5600	55	11	45	0.6	252KHz
RC0810-682K	6800	55	14	45	0.6	252KHz
RC0810-822K	8200	60	15	40	0.6	252KHz
RC0810-103K	10000	100	20	35	0.5	79.6KHz
RC0810-123K	12000	100	24	35	0.4	79.6KHz
RC0810-153K	15000	100	28	35	0.4	79.6KHz
RC0810-183K	18000	100	42	30	0.4	79.6KHz
RC0810-223K	22000	100	43	30	0.3	79.6KHz
RC0810-273K	27000	100	55	25	0.3	79.6KHz
RC0810-333K	33000	90	65	25	0.3	79.6KHz
RC0810-393K	39000	90	87	25	0.2	79.6KHz
RC0810-473K	47000	85	98	25	0.2	79.6KHz
RC0810-563K	56000	80	128	20	0.2	79.6KHz
RC0810-683K	68000	70	141	20	0.2	79.6KHz
RC0810-823K	82000	70	161	20	0.2	79.6KHz
RC0810-104K	100000	55	180	20	0.2	79.6KHz



RC0912 series

Part No.	Inductance (H)	Q(Min)	DCR (Max)	DCI mA (Max)	SRF M Hz (Min)	Measuring Frequency
RC0912-100K	10	110	0.04	2800	24	2.52MHz
RC0912-120K	12	110	0.04	2700	18	2.52MHz
RC0912-150K	15	110	0.05	2300	11	2.52MHz
RC0912-180K	18	90	0.06	2100	8.4	2.52MHz
RC0912-220K	22	90	0.07	2000	9.2	2.52MHz
RC0912-270K	27	90	0.10	1700	7.1	2.52MHz
RC0912-330K	33	90	0.12	1500	7.1	2.52MHz
RC0912-390K	39	80	0.12	1400	6.9	2.52MHz
RC0912-470K	47	70	0.13	1300	6.0	2.52MHz
RC0912-560K	56	70	0.14	1200	5.7	2.52MHz
RC0912-680K	68	60	0.15	1000	5.4	2.52MHz
RC0912-820K	82	50	0.16	900	4.6	2.52MHz
RC0912-101K	100	60	0.25	700	4.0	796KHz
RC0912-121K	120	60	0.28	700	3.6	796KHz
RC0912-151K	150	55	0.32	700	3.1	796KHz
RC0912-181K	180	55	0.47	600	2.8	796KHz
RC0912-221K	220	55	0.53	500	2.5	796KHz
RC0912-271K	270	50	0.60	450	2.4	796KHz
RC0912-331K	330	50	0.85	400	2.0	796KHz
RC0912-391K	390	50	0.95	350	2.1	796KHz
RC0912-471K	470	40	1.1	350	1.9	796KHz
RC0912-561K	560	30	1.2	300	1.8	796KHz
RC0912-681K	680	30	1.3	250	1.7	796KHz
RC0912-821K	820	30	1.4	200	1.5	796KHz
RC0912-102K	1000	70	2.0	200	1.1	252KHz
RC0912-122K	1200	70	2.3	180	1.0	252KHz
RC0912-152K	1500	70	2.9	150	1.0	252KHz
RC0912-182K	1800	70	3.3	120	0.9	252KHz
RC0912-222K	2200	70	4.5	110	0.7	252KHz
RC0912-272K	2700	70	5.5	90	0.7	252KHz
RC0912-332K	3300	60	5.7	80	0.6	252KHz
RC0912-392K	3900	60	6.5	80	0.6	252KHz
RC0912-472K	4700	60	7.2	60	0.6	252KHz
RC0912-562K	5600	60	9.5	50	0.5	252KHz
RC0912-682K	6800	60	11	50	0.5	252KHz
RC0912-822K	8200	50	13	50	0.4	252KHz
RC0912-103K	10000	120	16	40	0.3	79.6KHz
RC0912-123K	12000	120	18	40	0.3	79.6KHz
RC0912-153K	15000	110	21	40	0.3	79.6KHz
RC0912-183K	18000	110	23	40	0.3	79.6KHz
RC0912-223K	22000	110	33	35	0.2	79.6KHz
RC0912-273K	27000	100	37	35	0.2	79.6KHz
RC0912-333K	33000	90	42	35	0.2	79.6KHz
RC0912-393K	39000	90	45	30	0.2	79.6KHz
RC0912-473K	47000	80	52	30	0.2	79.6KHz

