

UU series common mode choke



Features

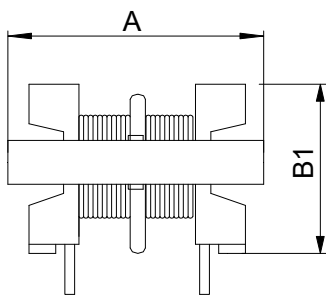
- Through hole profile
- Wide variety for sizes and specifications
- RoHS compatible
- Operating temperature: -20 to 125°C
- Wide application for power supplies and Led driver

Benefits

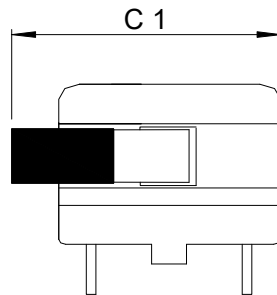
- Rapid prototyping available
- Custom design is available
- Aggressive price

Mechanicals (in mm):

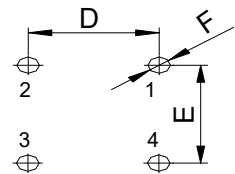
Horizontal structure



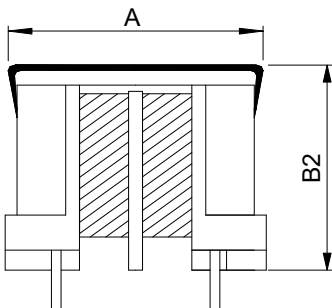
FRONT VIEW



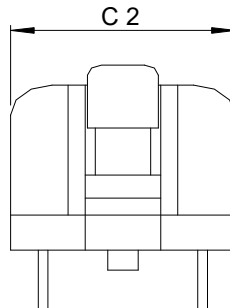
SIDE VIEW



Vertical structure



FRONT VIEW



SIDE VIEW

Recommended PCB layout

Series	Profile	A	B1	B2	C1	C2	D	E	F
UU9.8	V	17.0Max.		17.0Max.		11.5Max.	7.0	8.0	Ø1.0
UU9.8	H	17.0Max.	13.0Max.		17.0Max.		7.0	8.0	Ø1.0
UU10.5	V	19.0Max.		22.0Max.		18.0Max.	10.0	13.0	Ø1.1
UU10.5	H	19.0Max.	14.0Max.		18.5Max.		10.0	13.0	Ø1.1

Remark:

V: Vertical; H: Horizontal



Huizhou Boody Technology Co., Ltd.
[Http://www.boody.com.cn](http://www.boody.com.cn)

Tel: +86-752-2831031
 Fax: +86-752-2831030
 E-mail: sales@boody.com.cn

ISO9001/14001 Certified
 UL insulation systems: E358019